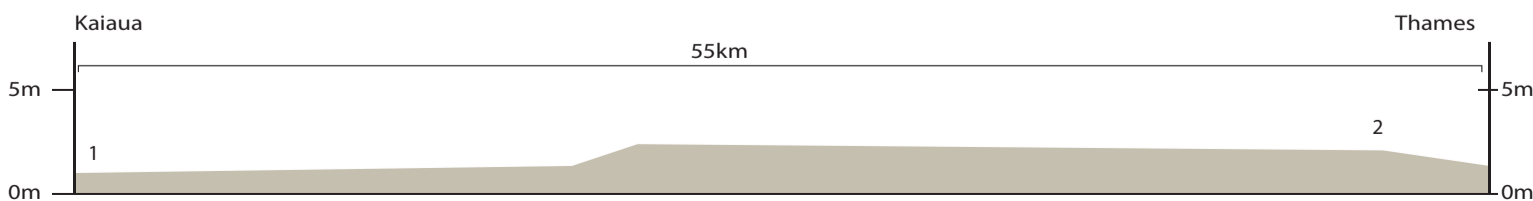
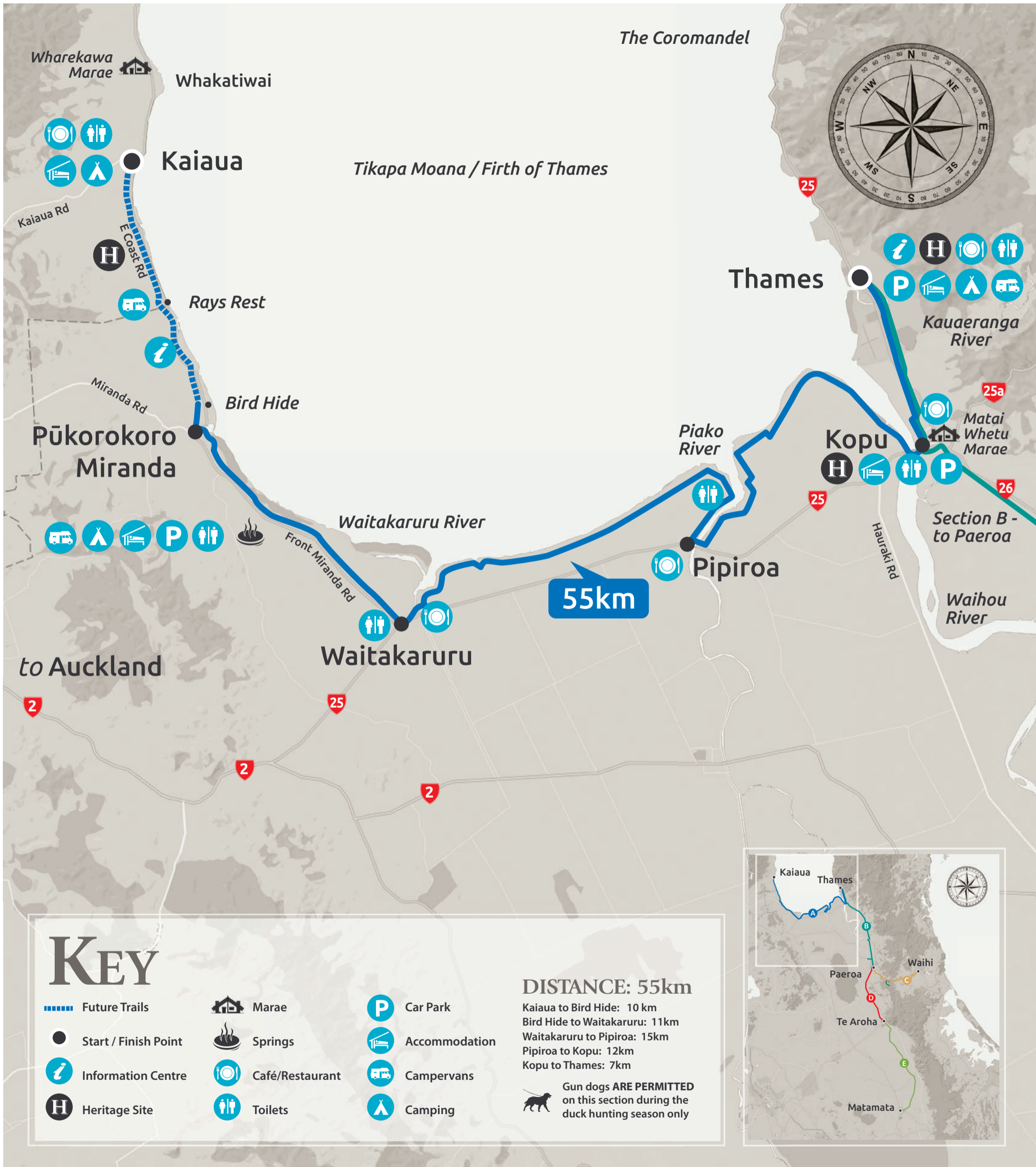


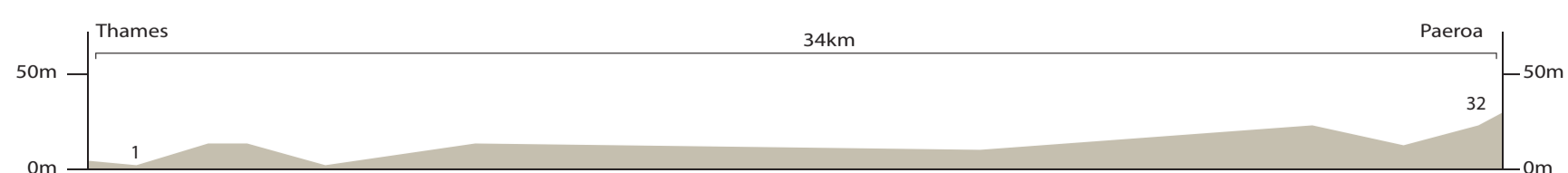
Taking in the Kaiaua Shore birds, lush farm lands and Wetlands with views to the Firth of Thames and the Coromandel.



For all enquiries and bookings for Accommodation, Places to Dine and things to See & Do visit

www.haurakirailtrail.co.nz

Cycle through lush farm land, passed small towns with a few glimpses of the Waihou and Ohinemuri Rivers arriving at the famous giant L&P bottle.



For all enquiries and bookings for Accommodation, Places to Dine and things to See & Do visit

www.haurakirailtrail.co.nz

A stunning trail through the Karangahake Gorge including bridges, bush clad mountain views and an 1100 metre long train tunnel.



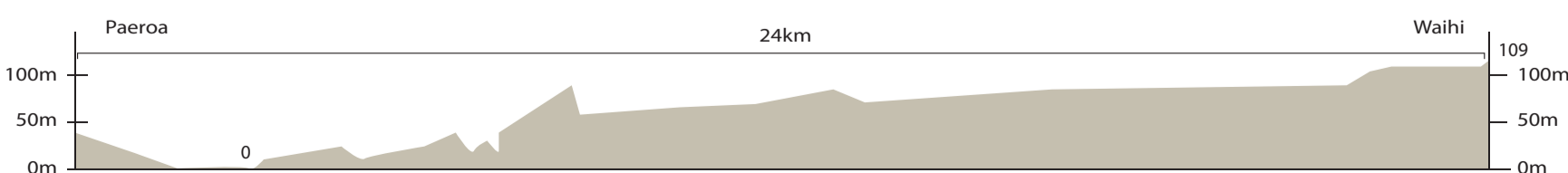
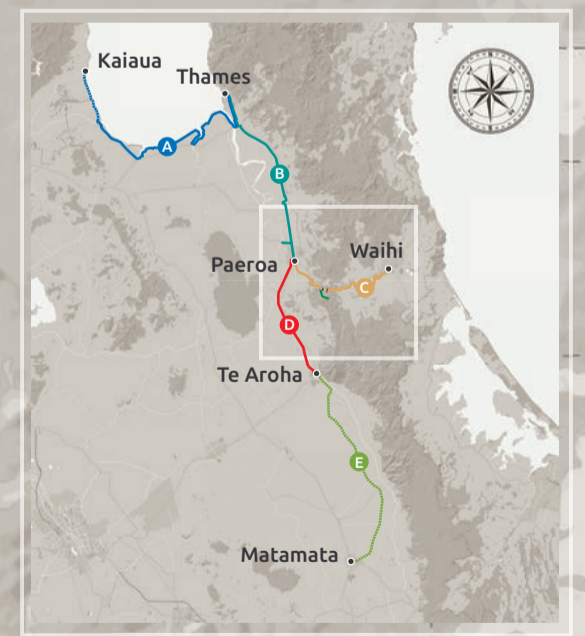
KEY

- | | | |
|----------------------|-----------------|---------------|
| Future Trails | Heritage Site | Car Park |
| Start / Finish Point | Tunnel | Accommodation |
| Information Centre | Marae | Campervans |
| Walkway | Café/Restaurant | Camping |
| Heritage Train Ride | Toilets | State Highway |

DISTANCE: 24km

Paeroa to Karangahake: 8km
 Karangahake to Waikino: 7km
 Waikino to Waihi: 9km

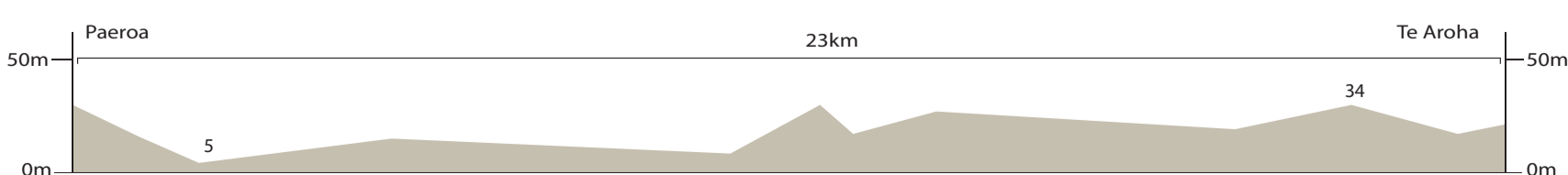
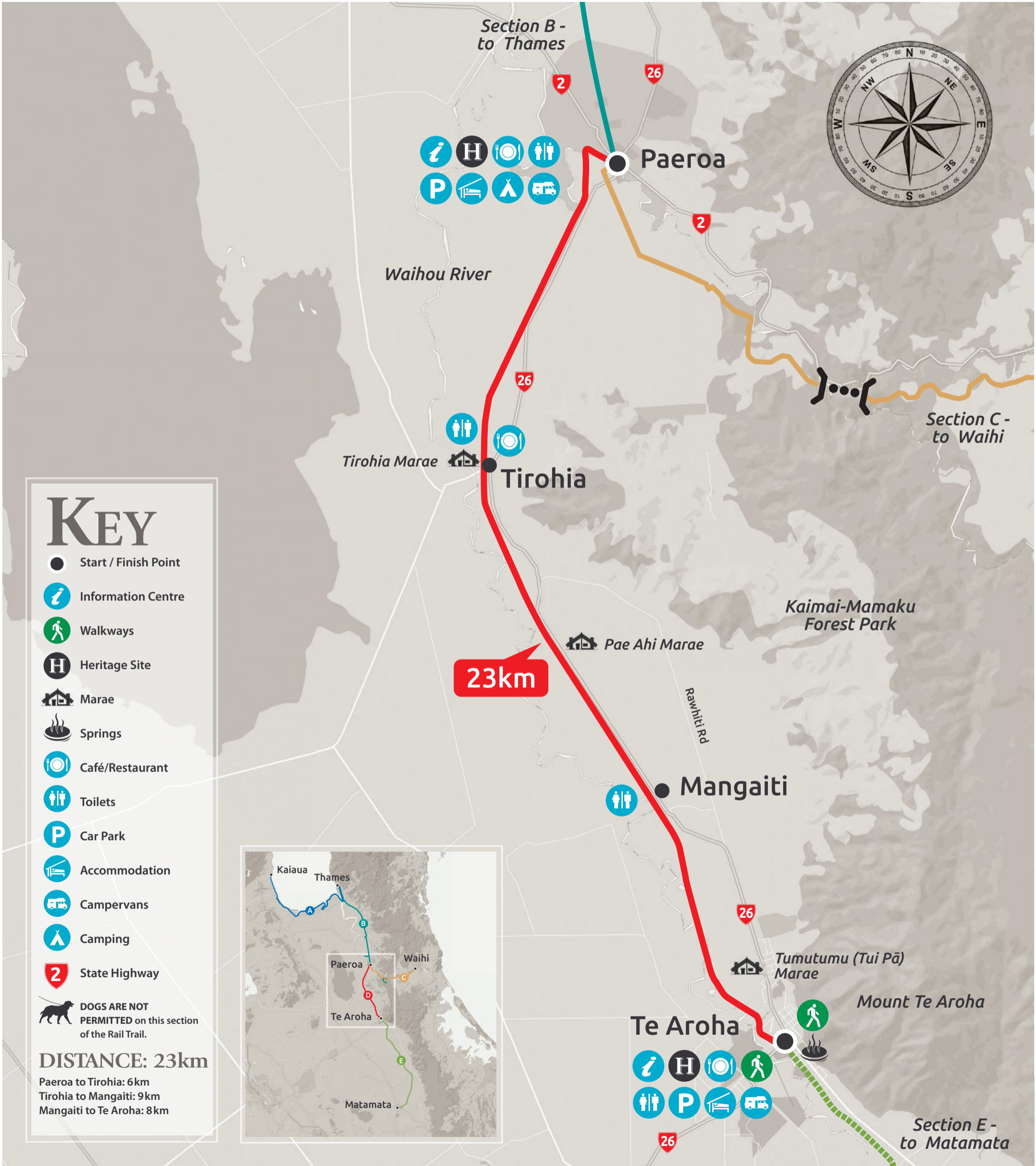
Dogs on leads are permitted in the Karangahake Gorge section of the Rail Trail from Waikino Station to the old Karangahake Hall site at Crown Bridge at the northern end of Victoria Tunnel, and where the Rail Trail intersects the urban areas of Waihi, Paeroa, Te Aroha and Thames. **DOGS ARE NOT PERMITTED** on any other section of the Rail Trail.



For all enquiries and bookings for Accommodation, Places to Dine and things to See & Do visit

www.haurakirailtrail.co.nz

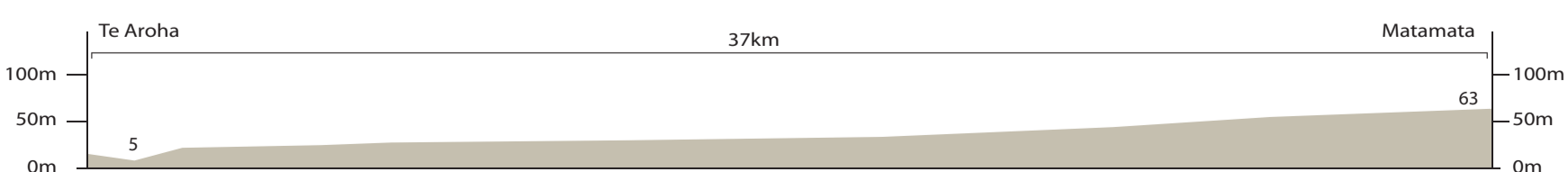
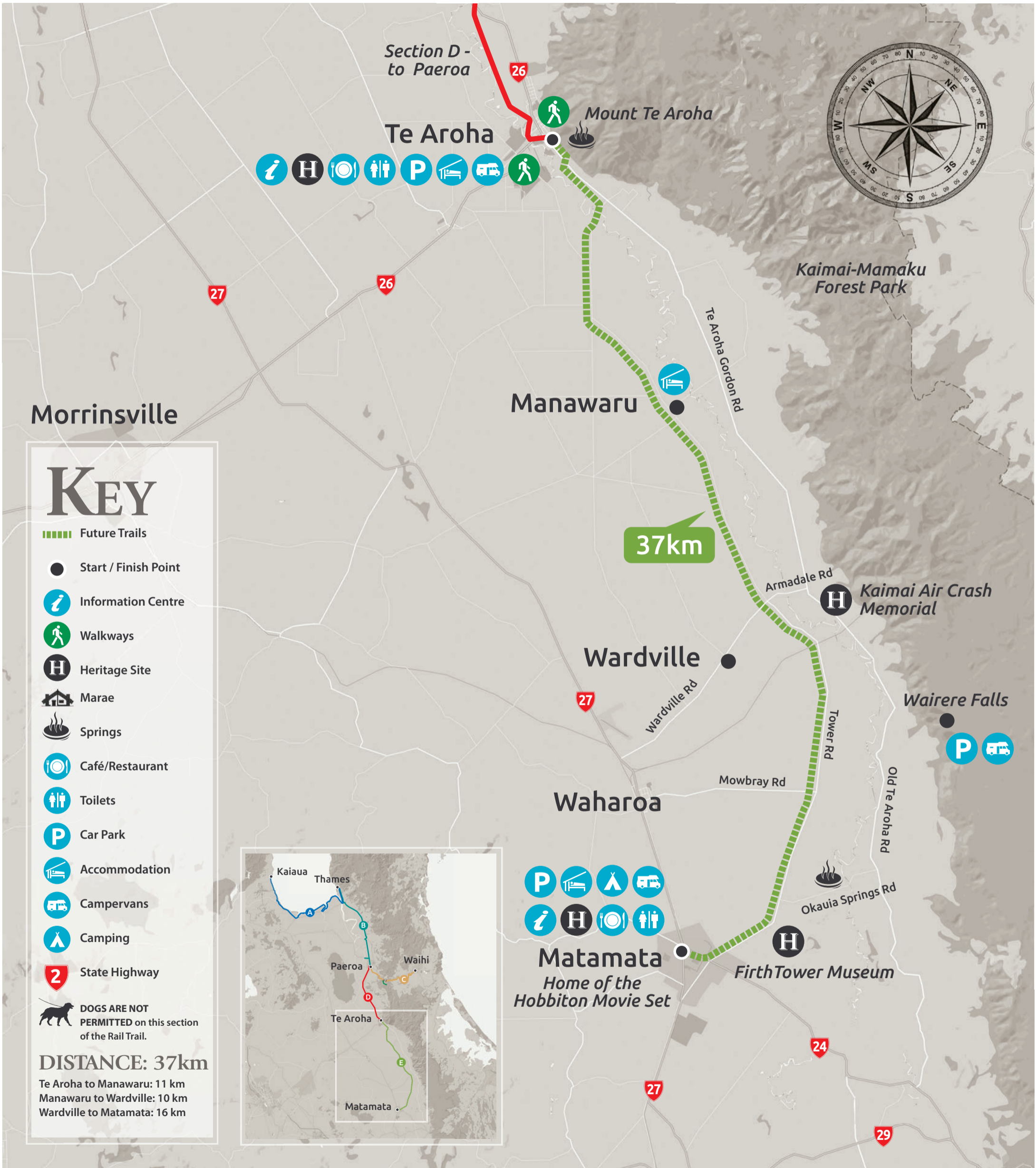
Leaving Paeroa you cross over the Ohinemuri River, following the old train track formation through lush farmland, with views of Mt Te Aroha and the Kaimai Ranges.



For all enquiries and bookings for Accommodation, Places to Dine and things to See & Do visit

Te Aroha to Matamata

An easy ride with views of the Kaimai Mamaku Ranges and the lush Waikato farmland. This section is still under construction.



For all enquiries and bookings for Accommodation, Places to Dine and things to See & Do visit

www.haurakirailtrail.co.nz